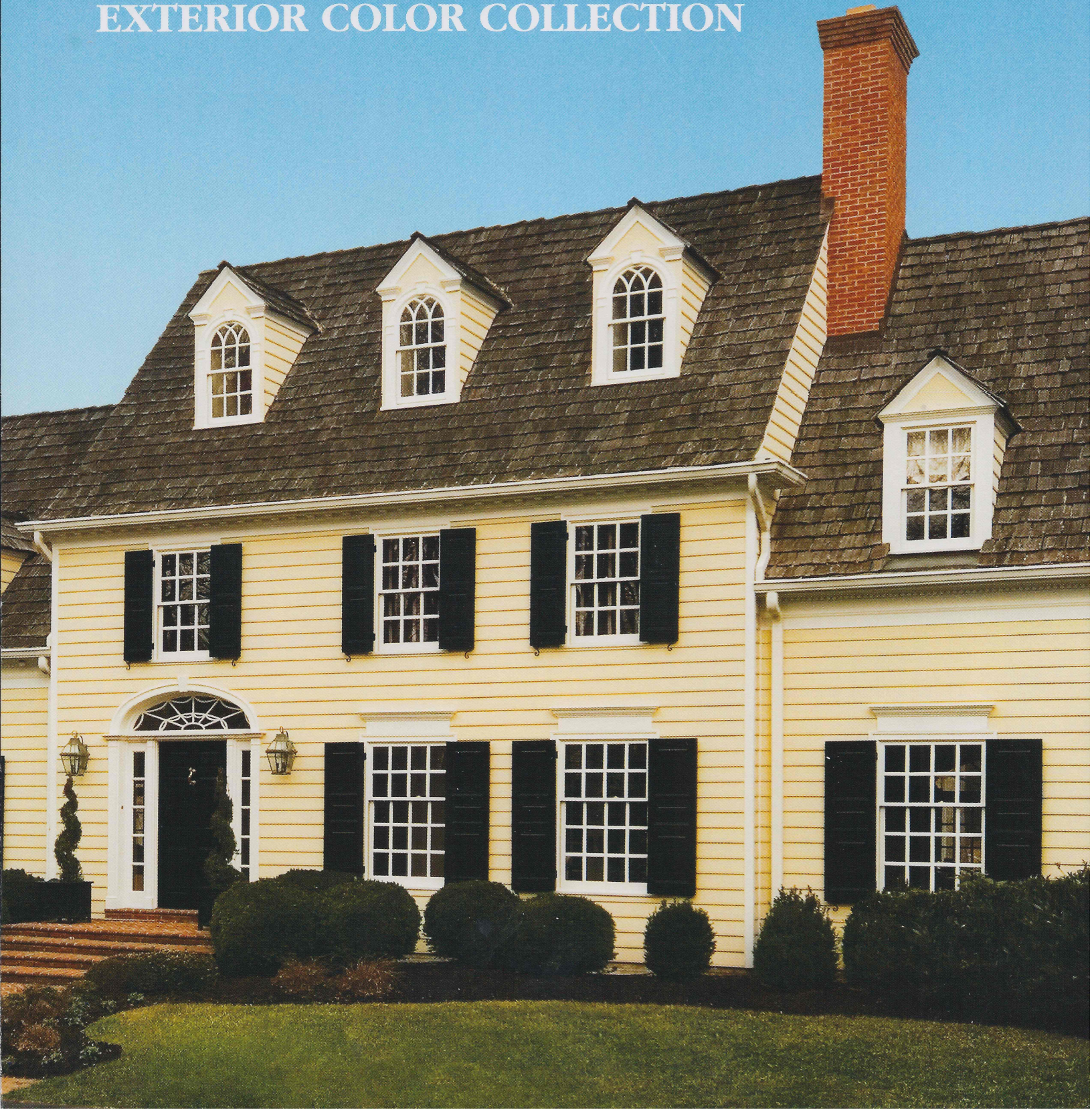


McCORMICK *Paints*

Commitment to Color

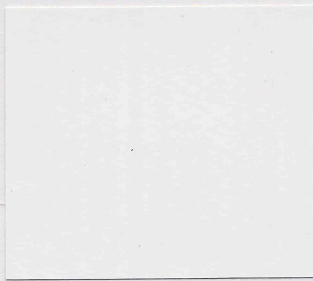
EXTERIOR COLOR COLLECTION

Best

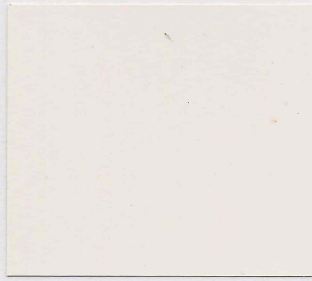


Colonial Colors

Inspired by our powerful history, our Colonial Colors selection represents authentic colors from our nation's first years. These colors will enhance exteriors for those seeking to reproduce our colonial heritage.



100 Super White



✓ 118 Colonial White



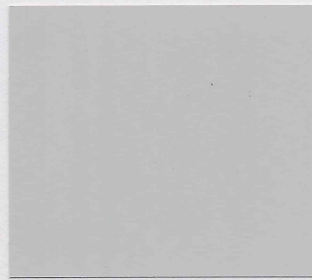
✓ 101 Amber White



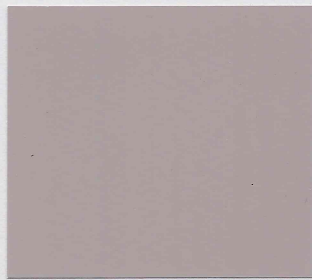
✓ 108 Wheat



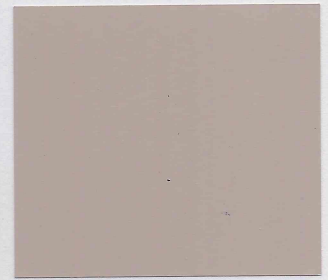
119 Newport



446 Antietam



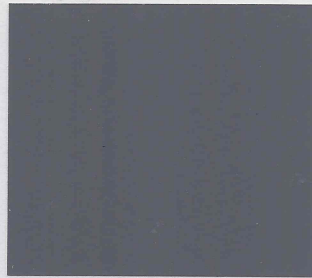
444 Bull Run



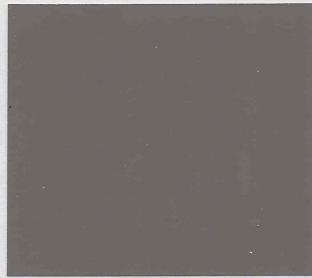
120 Kingston Clay



235 Potomac



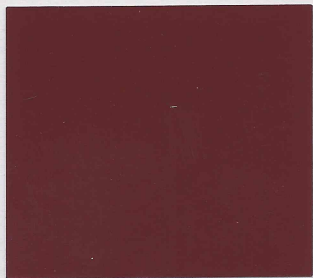
216 Hearthstone



215 Cobblestone Grey



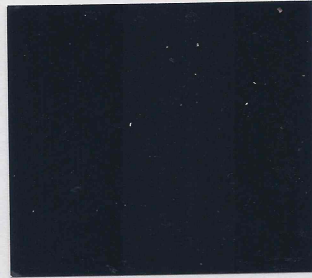
✓ 441 Harpers Ferry



✓ 225 Old Colonial Red



✓ 220 Georgetown Green



200 Black



✓ 227 Williamsburg

The chips on this card are printed to represent paint color and can vary slightly. For your convenience, most Colonial Colors are in stock at all McCormick store locations.

McCORMICK
Paints
Commitment to Color

Distinctive Combinations

These Distinctive Combinations are a blend of our Colonial and Chesapeake Color selections. These combinations include traditional and modern suggestions to enrich the exterior of your home.



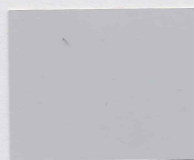
118 Colonial White



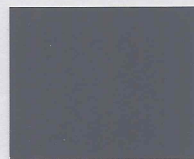
236 Dominion Green



229 Alexandria



228 Annapolis Grey



216 Hearthstone



452 Flintstone



119 Newport



215 Cobblestone Grey



231 Rock Creek



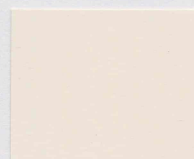
440 Sugarloaf



230 Camden



441 Harpers Ferry



440 Sugarloaf



231 Rock Creek



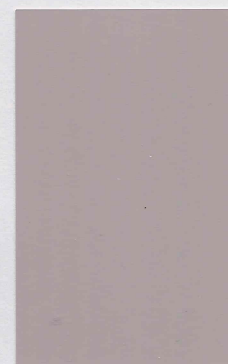
471 Grey Flannel



101 Amber White



233 Richmond



444 Bull Run



118 Colonial White



227 Williamsburg



228 Annapolis Grey



118 Colonial White



220 Georgetown Green



443 Mt. Vernon Grey



119 Newport



445 Gunston Hall



108 Wheat



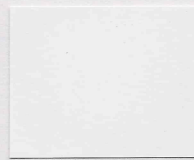
118 Colonial White



475 McKinney Stone



230 Camden



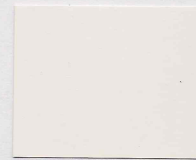
100 Super White



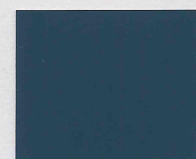
441 Harpers Ferry



228 Annapolis Grey



118 Colonial White



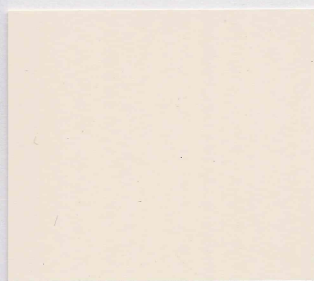
227 Williamsburg



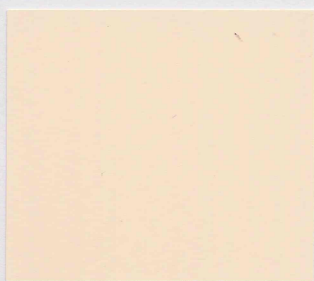
235 Potomac

Chesapeake Colors

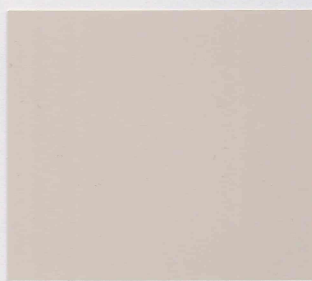
Inspired by the colors of the Mid-Atlantic region, our Chesapeake Colors selection showcases our rich history and modern style. No matter the style of your home, our Chesapeake Colors will enhance its exterior with genuine regional flair.



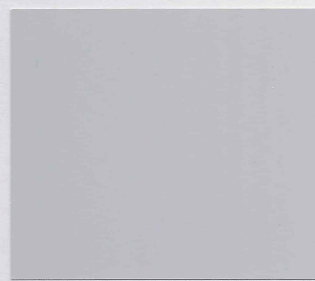
440 Sugarloaf



451 Yellow Pearl



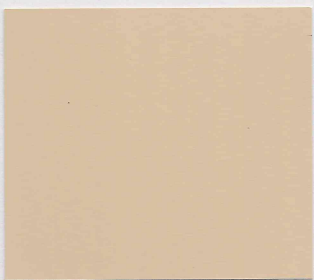
✓ 442 Putty Hill



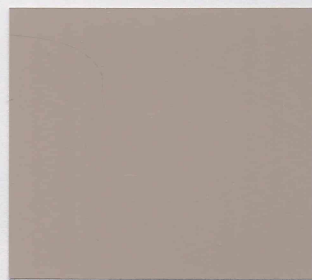
✓ 228 Annapolis Grey



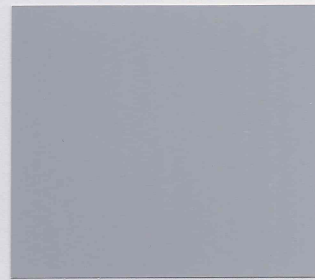
237 Glen Echo



229 Alexandria



230 Camden



452 Flintstone



443 Mt. Vernon Grey



231 Rock Creek



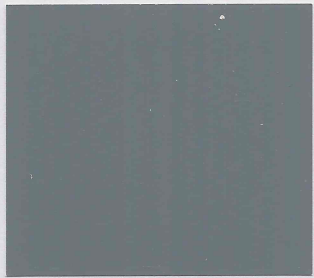
232 Takoma



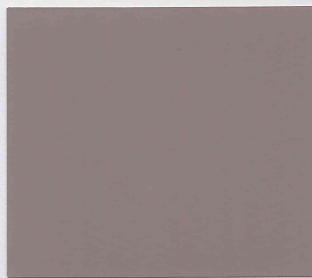
✓ 470 Smokey Pewter



445 Gunston Hall



474 Pinewood



471 Grey Flannel



✓ 472 Drum Hill Grey



233 Richmond ✓



236 Dominion Green



475 McKinney Stone



234 Bay Blue

McCORMICK *Paints*

EXTERIOR COLOR COLLECTION

GENERATION^{LX} - Lifetime Exterior 100% Acrylic Latex Paint

Implementing the latest in paint technology, performing extensive research and development, and utilizing field tests shows that the application and performance properties of Generation^{LX} - Lifetime Exterior are superior to all other brands.

GENERATION^{LX} - *Lifetime Exterior 100% Acrylic Latex Satin 46 series and Semi Gloss 47 series:*

A 100% acrylic latex ultra premium exterior paint for use on exterior wood, masonite siding, aluminum siding, vinyl siding, galvanized metal, asbestos shingles, cement siding, masonry, brick, stucco, block, and primed ferrous metal.

- Excellent adhesion to most exterior substrates
- Self priming formula
- One coat coverage
- Low temperature application (35°F)
- Lifetime warranty
- Tannin stain resistant
- Algae / mildew resistant
- Available in Super White & custom colors
- Excellent color retention
- Long term durable finish

State House 100% Acrylic Latex Exterior Paint

Formulated for outstanding durability and hiding power, State House is easy to apply and demonstrates superior color retention. State House is an excellent choice for any exterior project.

State House **Exterior Lustre Acrylic Latex House Paint 27 series:**

A 100% acrylic latex semi-gloss house paint ideal for exterior wood, masonite siding, aluminum siding, cement siding, brick, masonry, block, stucco, galvanized metal, and primed or previously painted metal.

State House **Exterior Flat Acrylic Latex House Paint 19 series:**

A 100% acrylic latex flat house paint recommended for use on exterior wood, cement siding, galvanized metal, brick, masonry, stucco, block, and primed metal.

State House **Exterior Acrylic Latex Primer 06438:**

An acrylic primer for exterior wood, cement siding, shakes, shingles, trim and galvanized metal. Helps resist staining of wood, knots, etc.

State House **Exterior Oil Base Primer 06434:**

A linseed oil based primer for use on all exterior wood siding and trim. Prolongs the life of finish coats and minimizes bleed on staining type woods.

McCORMICK *Paints*

CORPORATE HEADQUARTERS

2355 LEWIS AVENUE

ROCKVILLE, MARYLAND 20851

(301) 770-3235

1-877-PAINT-55 (toll free)

Fax: (301) 770-9814

www.mccormickpaints.com

COMMITMENT TO QUALITY